

**Mountains Restoration Trust
Cold Creek - Old Topanga
Sisson Properties**

Proposition A Grant Amount: up to \$1,215,000.00 (Needs to assigned to MRT by SMMC-Big 5 Excess)

Total Project Cost: Sellers will make a partial donation – (\$285K at most)

Other Funding Sources: None.

Acres to be acquired: 80.3 acres (7 parcels)

Appraisal: June 30, 2014 - \$1,485,000.00 Valuation

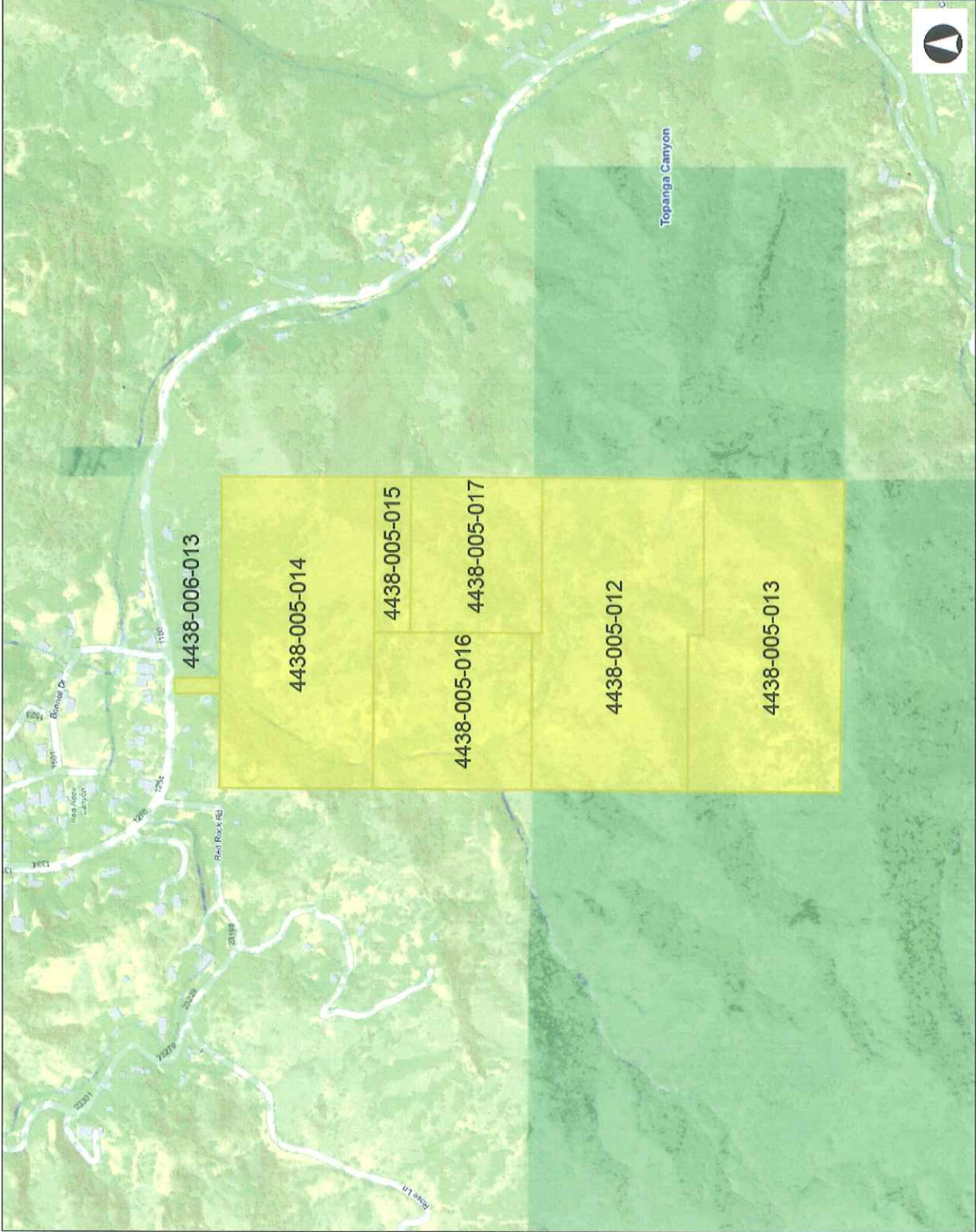
Background Info

Acquire 7 parcels of land totaling 80.3 acres. These 80+ acres in Old Topanga are north-facing with dense chaparral, coastal sage scrub, rock outcrops, oak woodland, wetland and mixed riparian woodland communities. Land slopes create differing aspects which in turn creates a diversity of plant communities, habitat and species. Between the ridges, two blue-line streams and several intermittent streams flow from the higher elevations of the Old Topanga Creek watershed. An oak woodland creates the backdrop for the houses along Old Topanga Canyon Road reducing fuel modification impacts. A 12,610 square foot parcel connects to Old Topanga Canyon Road providing a south-trending trail.

Acquisition of the 80.08 acres will connect to MRT's Cold Creek Preserve to the west, the State Backbone Trail to the south, and two 20-acre parcels to the east that are owned by MRT and State Parks respectively. Connecting these ownerships will have many positive results: the area will remain whole and not fragmented; riparian and wetland areas may provide year-round water for Old Topanga Creek, a tributary of Topanga Creek.

The acquisition properties contribute to wildlife connectivity and corridors. Acquisition of the Topanga Connection will increase wildlife connectivity eastward and widen the wildlife corridor between Cold Creek and Topanga. According the current County Land Use Plan, which has been approved by the Coastal Commission and is currently being reviewed by the Los Angeles County Board of Supervisors, the Sisson property contains a great deal of H1 and H2 Category Habitat land within a Sensitive Environmental Resource Area

MRT Cold Creek Old Topanga Sisson Properties



0.3 Miles

0 0.14

0

0.3

County of Los Angeles

This map is for reference only and should not be used for legal decisions. While the County of Los Angeles makes its best effort to ensure data is accurate, the County makes no representation or warranty of any kind.

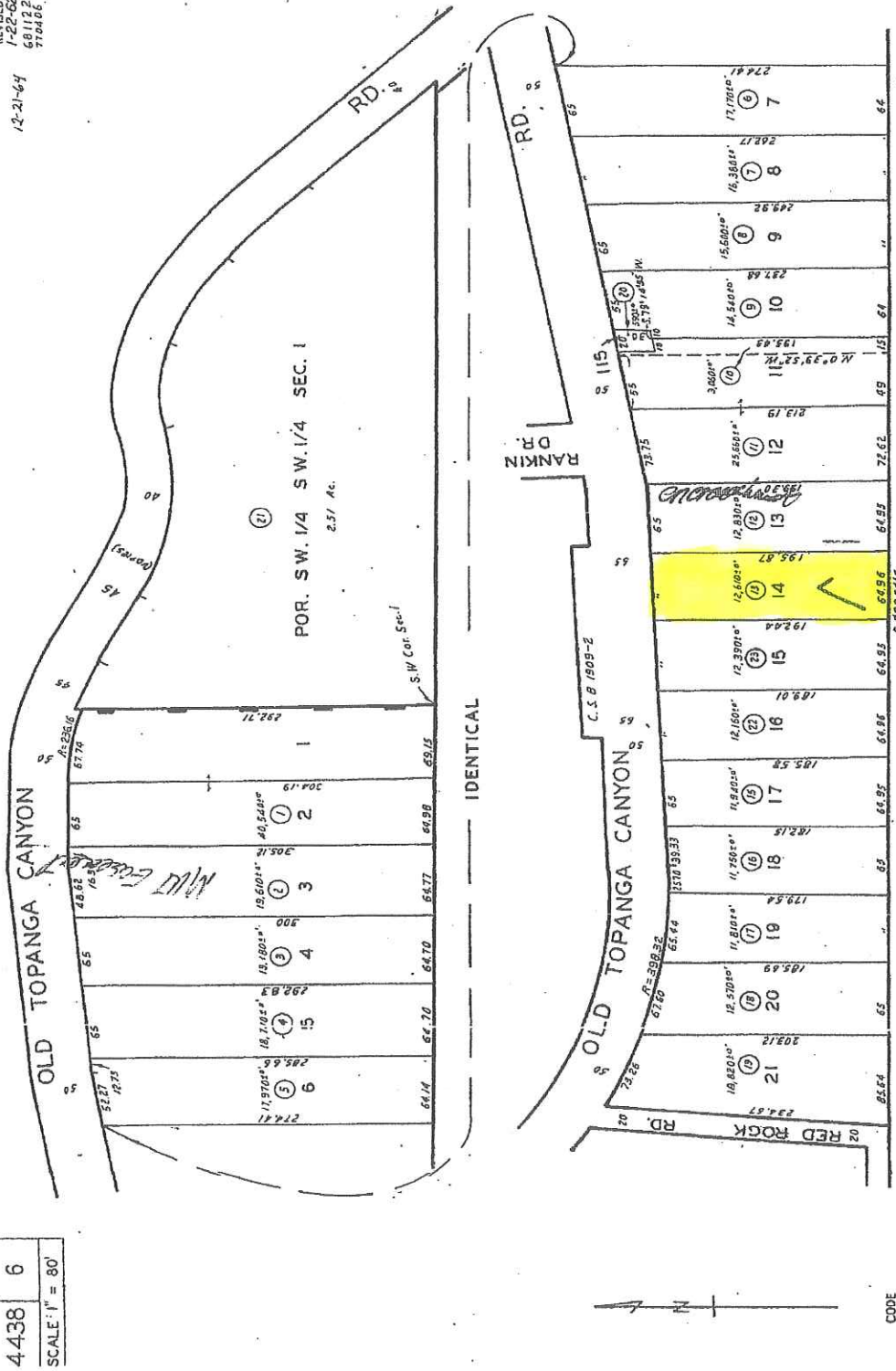


Legend

Notes

REVISED
1-22-62
681122
7704166

4438 6
SCALE: 1" = 80'



CODE
1653

TRACT NO. 6131 TIS, R17W.

M.B. 66-37-40

FOR PREV. ASSM'T. SEE: 496-1 & 9

ASSESSOR'S MAP
COUNTY OF LOS ANGELES, CALIF.

THIS PLAT IS FOR YOUR AID IN LOCATING YOUR LAND WITH REFERENCE TO STREETS AND OTHER PARCELS. WHILE THIS PLAT IS BELIEVED TO BE CORRECT, THE COMPANY ASSUMES NO LIABILITY FOR ANY LOSS OCCURRING BY REASON OF RELIANCE THEREON

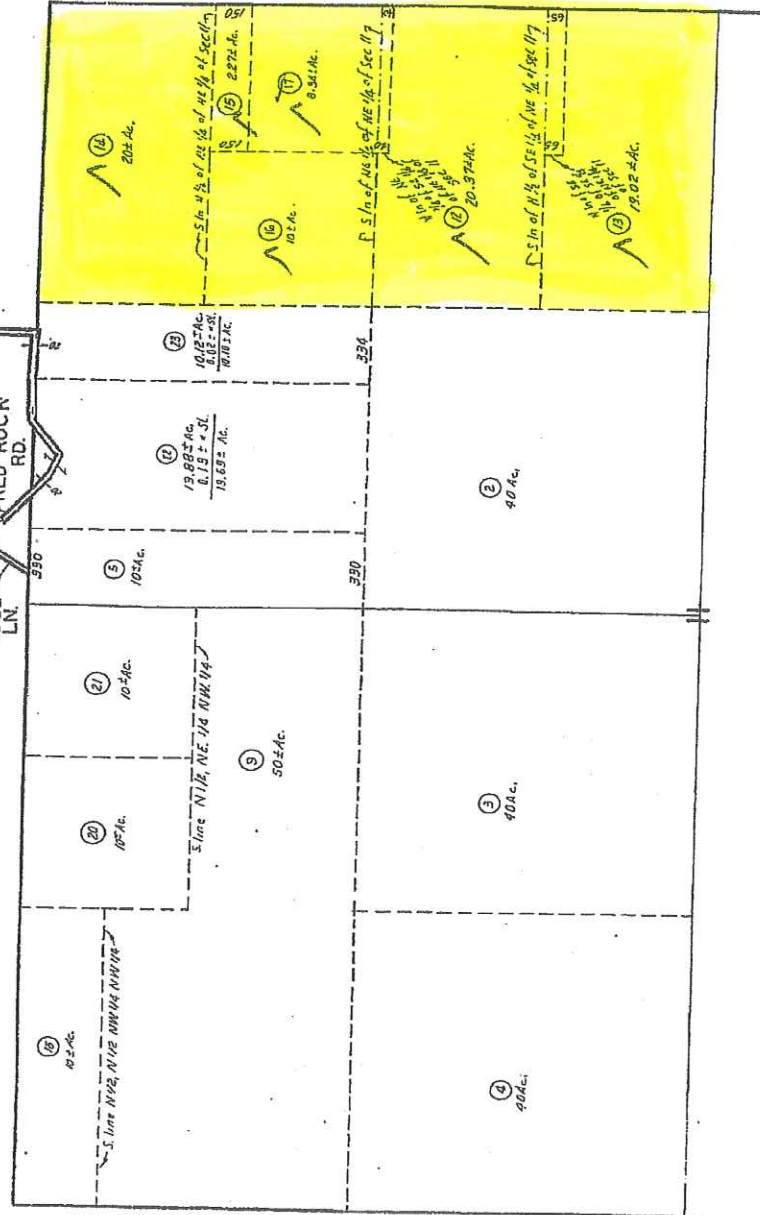
4-28-65
1-23-65
681122
REVISED
1-22-62
3-16-63
72075101
83/2/10-94
960381020002-07



SCALE IN 170 OF AN INCH

1996

4438 | 5
SCALE 1" = 400'



TIS, R.17W.

THIS PLAT IS FOR YOUR AID IN LOCATING YOUR LAND WITH REFERENCE TO STREETS AND OTHER PARCELS. WHILE THIS PLAT IS BELIEVED TO BE CORRECT, THE COMPANY ASSUMES NO LIABILITY FOR ANY LOSS OCCURRING BY REASON OF RELIANCE THEREON

CODE 1653

FOR PREV. ASSMT. SEE: 496-43

APR 19 1996
ASSESSOR'S MAP
COUNTY OF LOS ANGELES, CALIF.